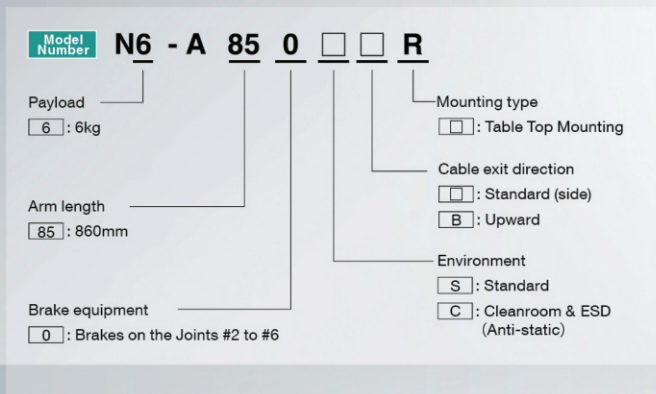
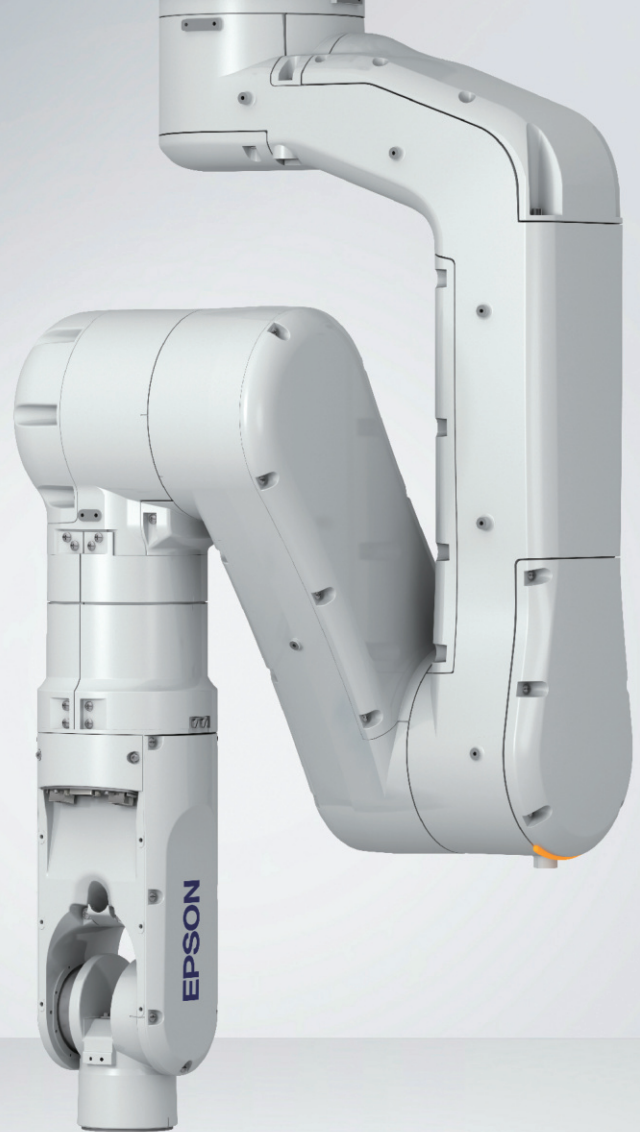


N6-A850

Ceiling mounted 6-axis robot with unique folding arm design

- 6-axis flexibility and SCARA-like arch motion enables shortcut access to work-piece from any direction in limited space
- 6kg payload ideal for automotive component handling
- Hollow arm construction for easy cabling setup and teaching



Specifications

Model name		N6
Model number		N6-A850□□R
Max. motion range	P point:through the center of J4/J5/J6	860 mm
	Wrist flange surface	960 mm
Payload**	Rated	3.0 kg
	Maximum	6.0 kg
Repeatability	Joints #1-#6	±0.03 mm
Max. motion range	J1	326 deg/sec
	J2	326 deg/sec
	J3	444 deg/sec
	J4	444 deg/sec
	J5	450 deg/sec
	J6	537 deg/sec
Allowable moment of inertia**	Joint #4	0.42 kg·m ²
	Joint #5	0.42 kg·m ²
	Joint #6	0.14 kg·m ²
Installation environment	Standard, Cleanroom & ESD**	
Mounting type	Ceiling	
Weight (cable not included)	64 kg	
Applicable Controller	RC700-A	
Installed wire for customer use	D-sub 15 pin, RJ45 8 pin x2 (Cat 5e, for Vision and Force sensor)	
Installed pneumatic tube for customer	Φ6 mm x 2 : 0.59 MPa (6 kgf/cm ²)	
Power	AC200-240 V Single phase	
Power Consumption**	2.2 kVA	
cable length	3 m/5 m/10 m/15 m/20 m	
Safety standard	CE, KC	

*1 : Do not apply the load exceeding the maximum payload.

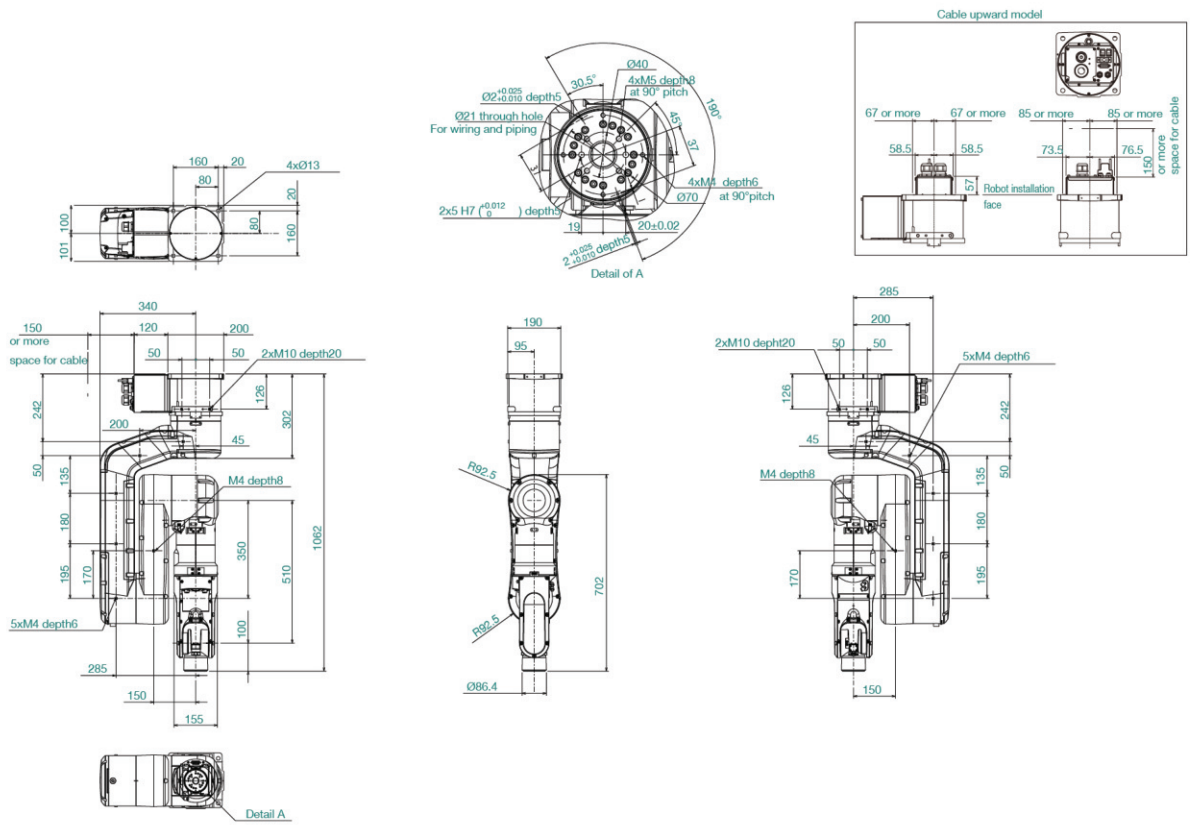
*2 : If the center of gravity is at the center of each arm. If the center of gravity is not at the center of each arm, set the eccentric quantity using INERTIA command.

*3 : Complies with ISO Class 5 (ISO14644-1) and older Class 1 cleanroom standards.

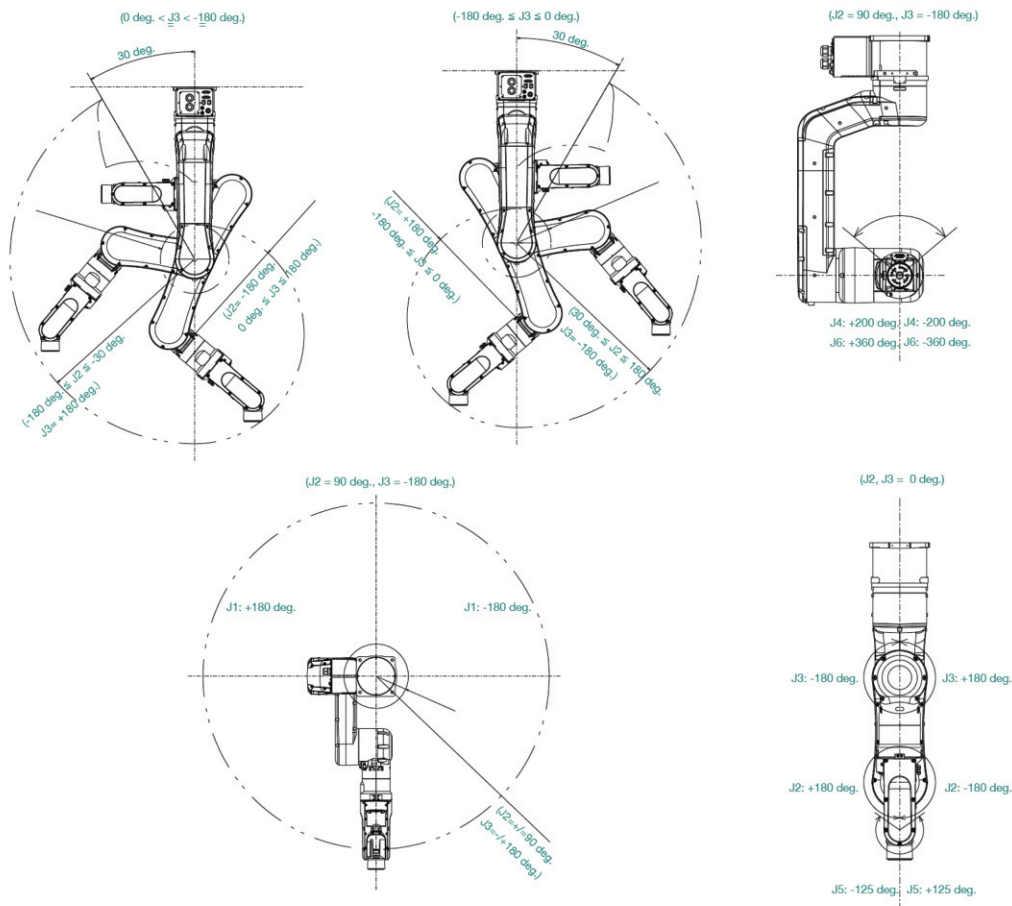
*4 : Varies according to operating environment and program.

Outer Dimensions

[単位:mm]



Motion Range

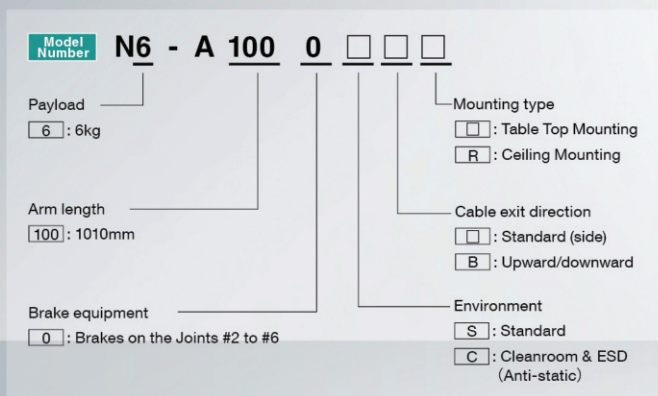
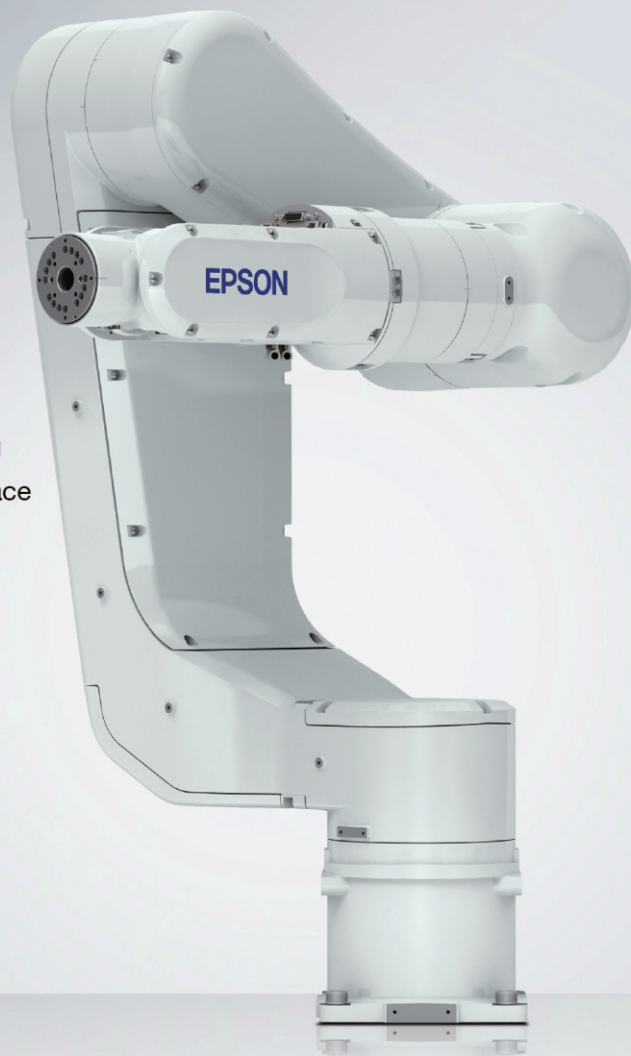


SCARA robots
6-axis robots
Controllers
Software
Vision systems
Force-sensing systems
Options

N6-A1000

Original folding arm mechanism reduces 6-axis robot installation space requirements

- High space utilization efficiency
 - Extended reach for tall workpieces and high shelving
 - Folding arm design enables installation in limited space
- Hollow arm construction for easy cabling setup



Specifications

Model name		N6
Model number		N6-A1000□□□
Max. motion range	P point:through the center of J4/J5/J6	1010 mm
	Wrist flange surface	1110 mm
Payload**	Rated	3.0kg
	Maximum	6.0kg
Repeatability	Joints #1-#6	±0.04mm
Max. motion range	J1	326 deg/sec
	J2	326 deg/sec
	J3	444 deg/sec
	J4	444 deg/sec
	J5	450 deg/sec
	J6	537 deg/sec
Allowable moment of inertia**	Joint #4	0.42kg·m ²
	Joint #5	0.42kg·m ²
	Joint #6	0.14kg·m ²
Installation environment	Standard, Cleanroom*3 &ESD	
Mounting type	Table top / Ceiling **	
Weight (cable not included)	69 kg	
Applicable Controller	RC-700A	
Installed wire for customer use	D-sub 15 pin, RJ45 8 pin x 2 (Cat 5e, for Vision and Force sensor)	
Installed pneumatic tube for customer	Φ6 mm x 2 : 0.59 MPa (6 kgf/cm ²)	
Power	AC200-240 V Single phase	
Power Consumption**	2.2 kVA	
cable length	3 m/5 m/10 m/15 m/20 m	
Safety standard	CE, KC	

*1 : Do not apply the load exceeding the maximum payload.

*2 : If the center of gravity is at the center of each arm. If the center of gravity is not at the center of each arm, set the eccentric quantity using INERTIA command.

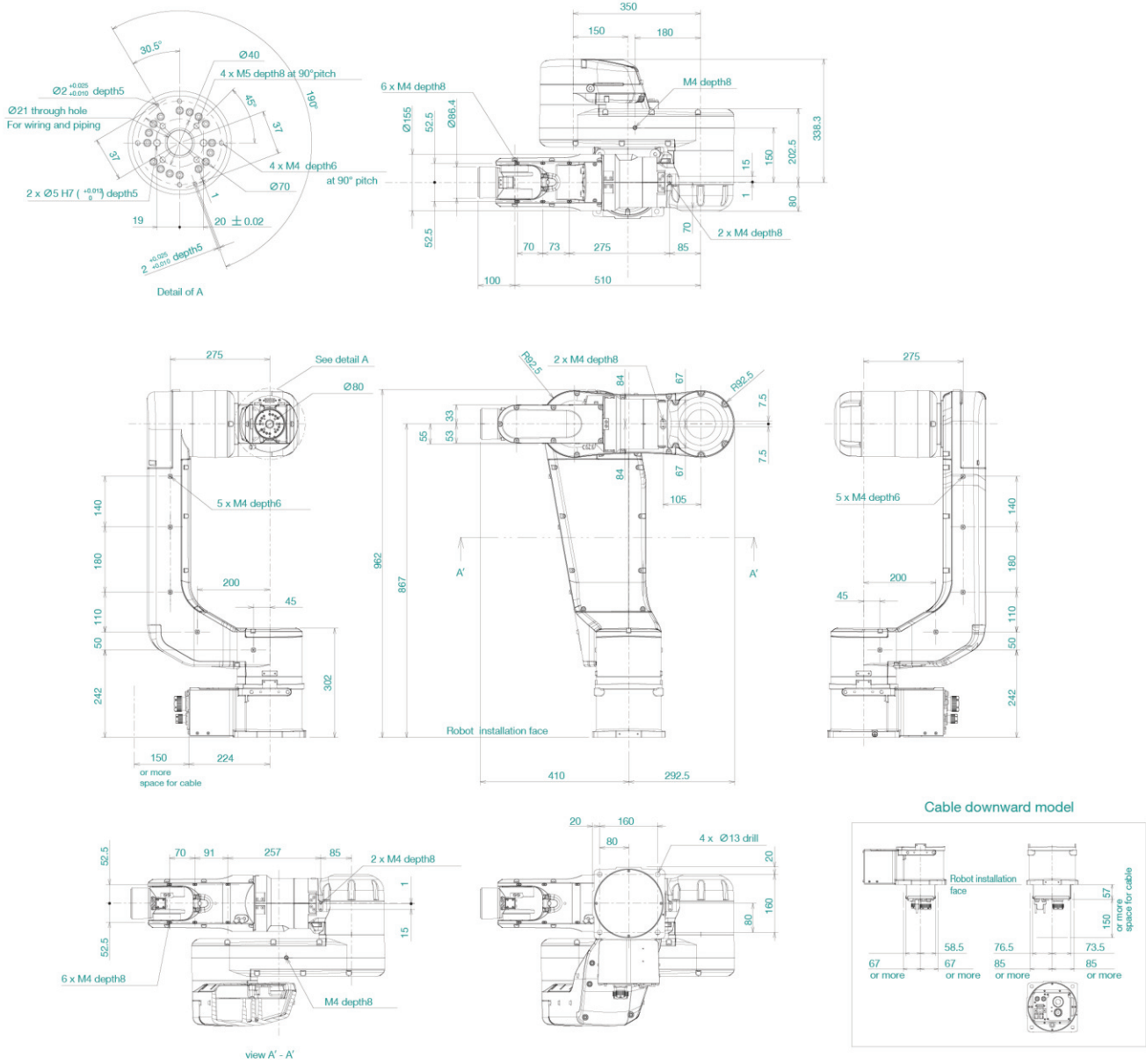
*3 : Complies with ISO Class 5 (ISO14644-1) and older Class 1 cleanroom standards.

*4 : Ceiling-mounted robots should be programmed using the EPSON RC+ software ceiling-mount settings.

*5 : Varies according to operating environment and program.

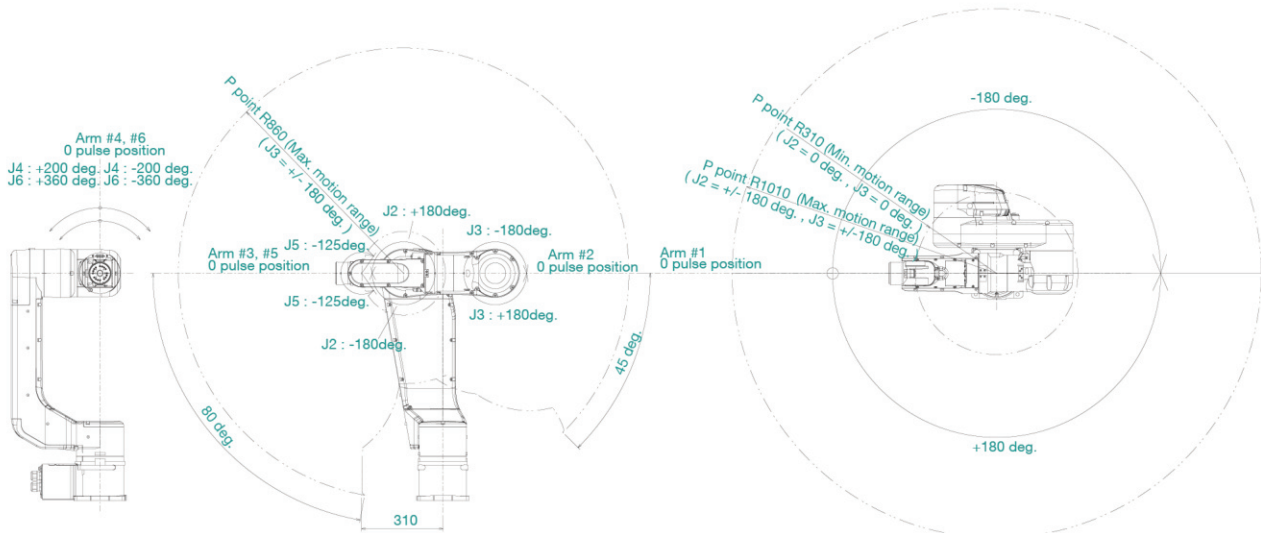
Outer Dimensions

[Unit: mm]



Motion Range

[Unit: mm]



SCARA robots

6-axis robots

Controllers

Software

Vision systems

Force-sensing systems

Options